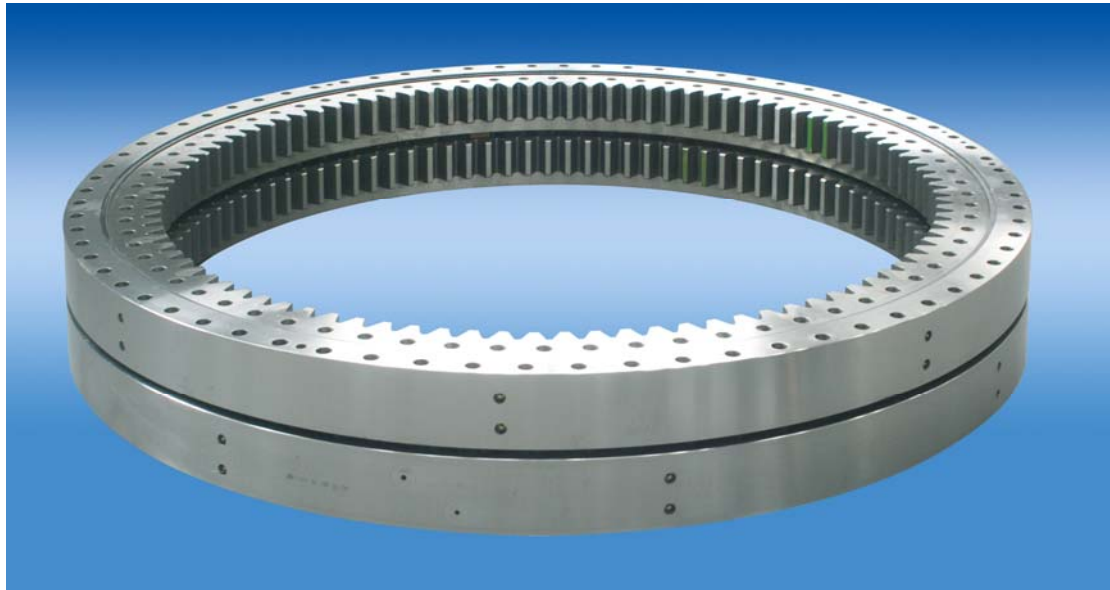


Double Row Ball Slewing Bearing

The double row ball slewing bearings have two types: double row different diameter ball slewing bearing and double row same diameter ball slewing bearing.

The double row ball slewing bearing is suitable for the larger axial load, for its ability of high supporting capacity and reliability.

We offer our products in accordance to your requirements, no teeth type (non-geared), outer teeth type (external geared), inner teeth type (internal geared) are all available.



1. Type: We offer our products in accordance with the client's requirements. This series ring bearings are available in internal geared, external geared and non-geared configurations.

2. Delivery time: 1 day - 120 days

3. Payment: T/T, ILC (irrevocable letter of credit) etc.

4. Instruction, Structure, Installation, Operation, Maintenance, Packing and Shipping of Slewing rings:

5. Packaging: Metal pallet or plywood box.

Wuxi Lida Gear Manufacturing Co., Ltd.

Add: North Lutong Road 18#, Yangshan, Huishan District, Wuxi, Jiangsu, China

Post Code: 214156

Tel: +86-510-83958957

+86-510-83957100

Fax: +86-510-83951235

Email: lida1880@hotmail.com

Website: <http://www.lidaslewingring.com/>