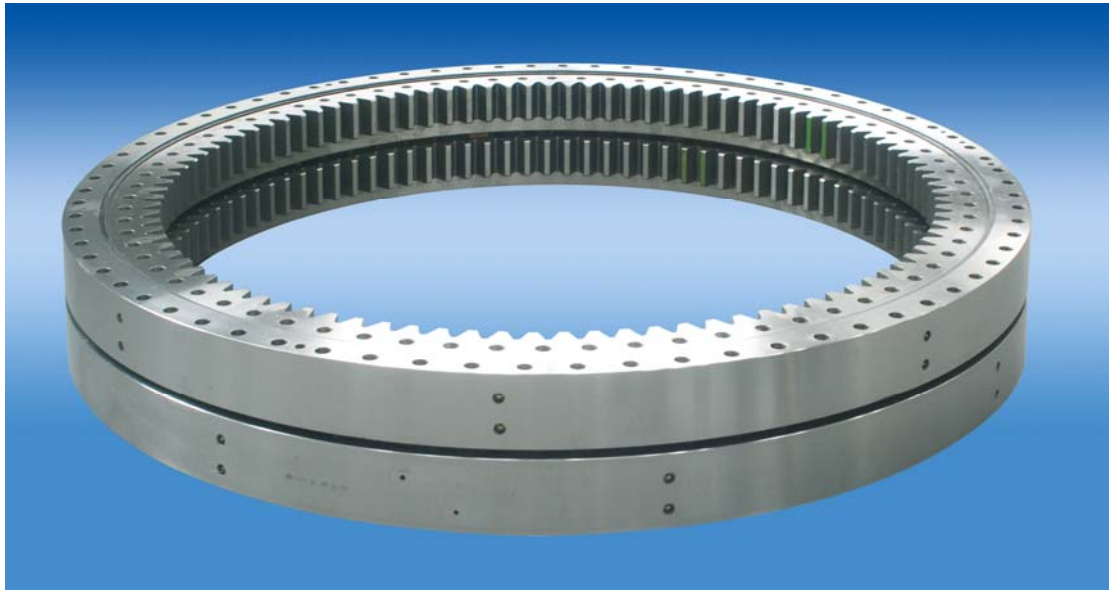


Double Row Different Ball Slewing Bearing

This series of double row different ball slewing bearing is mainly made up of in-up ring, in-down ring and outside ring, so balls and spacers can be directly discharged into the upper and lower raceway. According to stress conditions, bearings are arranged to two rows of balls of different diameter. This assembly is very convenient. Angle of both upper and lower raceway is 90° so bearings can bear large axial force and resultant torque. Bearing needs special design when radial force is 0.1 times larger than the axial force.



2. Application

Large in sizes and features compact in design, bearings are particularly application in handling equipments requiring medium above diameter, such as tower crane and mobile crane.

3. **Type:** non-gear (no teeth type), external gear (out teeth type), internal gear (out teeth type)

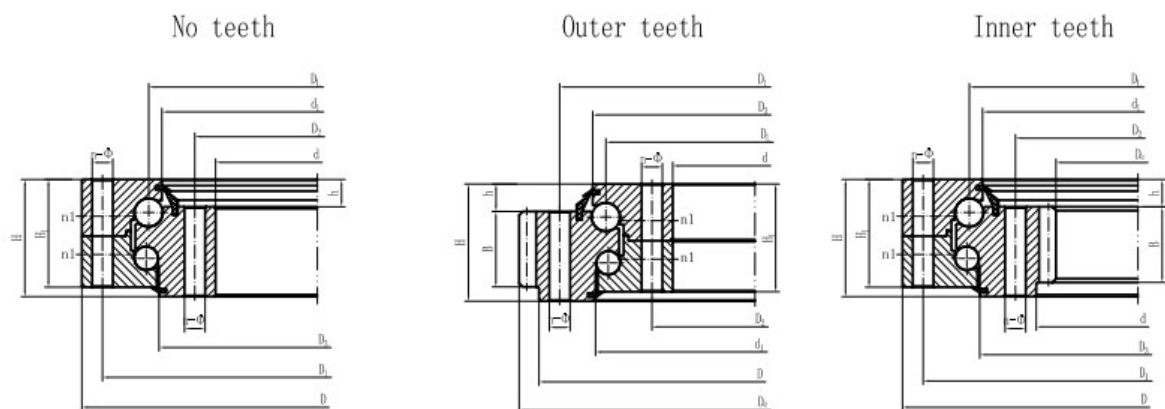
4. **Delivery time:** 1 day - 120 days.

5. **Payment:** T/T, ILC (irrevocable letter of credit) etc.

6. **Instruction, Structure, Installation, Operation, Maintenance, Packing and Shipping of Slewing rings:**

7. **Packaging:** Metal pallet or plywood box.

8. **Parameters of Double Row Different Ball Slewing Bearing:**



Wuxi Lida Gear Manufacturing Co., Ltd.

Add: North Lutong Road 18#, Yangshan, Huishan District, Wuxi, Jiangsu, China

Post Code: 214156

Tel: +86-510-83958957

+86-510-83957100

Fax: +86-510-83951235

Email: lida1880@hotmail.com

Website: <http://www.lidaslewingring.com/>