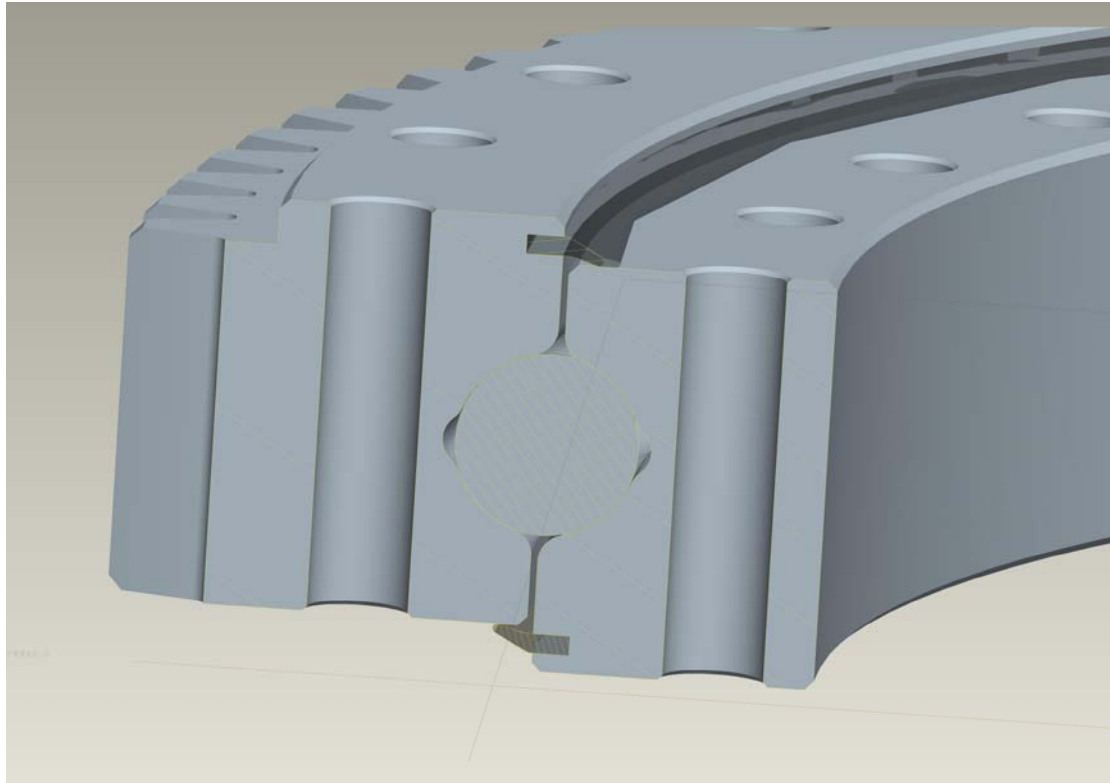


## Single Row Cross Roller Slewing Bearing

Our single row cross roller slewing ring is mainly made up of inside and outside rings. It features compact in design, light in weight, small in assembling clearance, and high in installing precision. As the rollers are crossed arranged by 1:1, it is suitable for high precision mounting and capable to bear axial force, radial force and resultant torque simultaneously.



### **2. Application:**

This series have widely application in lift transport aircraft, construction machinery, and military products.

### **3. Type:**

We offer our products in accordance with the client's requirements, no teeth type (non-g geared), outer teeth type (external geared), inner teeth type (internal geared) of single-row cross roller slewing ring are all available.

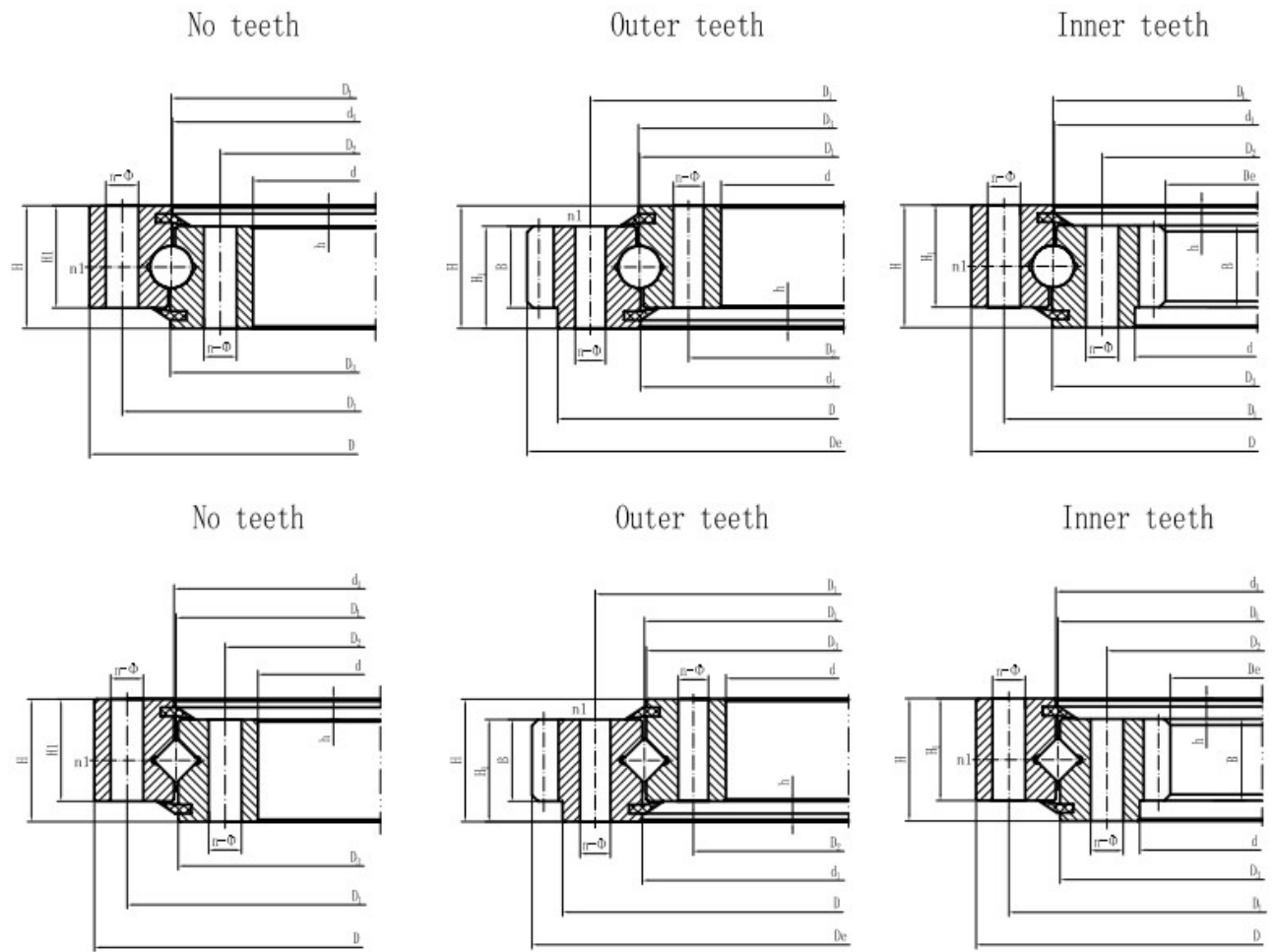
**4. Delivery time:** 1 day - 120 days

**5. Payment:** T/T, ILC (irrevocable letter of credit) etc.

**6. Instruction, Structure, Installation, Operation, Maintenance, Packing and Shipping of Slewing rings:**

**7. Packaging:** Metal pallet or plywood box.

**8. Parameters of Single Row Cross Roller Slewing Bearing:**



**Wuxi Lida Gear Manufacturing Co., Ltd.**

**Add:** North Lutong Road 18#, Yangshan, Huishan District, Wuxi, Jiangsu, China

**Post Code:** 214156

**Tel:** +86-510-83958957

+86-510-83957100

**Fax:** +86-510-83951235

**Email:** lida1880@hotmail.com

**Website:** <http://www.lidaslewingring.com/>